



FermCap™ Eco: New Natural Plant-based Processing Aid

FermCap™ Eco benefits:

Natural Plant-based

- Vegan friendly
- Allergen free

Optimizes process efficiencies

- Increases fermenter capacity up to 7-15%
- Optimized to work with cross flow filtration membranes
- Freeze thaw resistant
- Reduced CIP times as fermentation vessels are not fouled
- Enhances hop (alpha-acid) utilization up to 10%
- Maximises CO₂ recovery
- Reduces expensive wort losses

Enhances beer quality

- Improves beer foam stability
- No impact on foam positive proteins in the final beer

Brewing beer cost effectively and sustainably

FermCap™ Eco is a new innovative plant-based foam control product, patent pending technology, increasing fermenter capacity, improving beer foam stability and enhancing hop utilization.

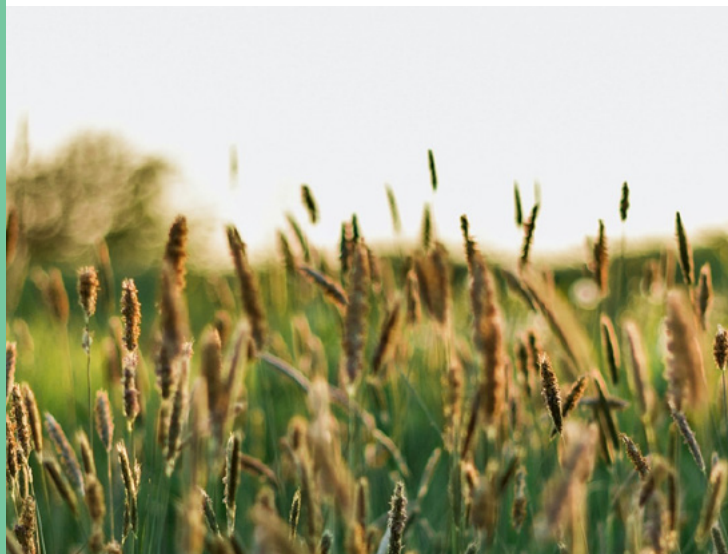
How does FermCap™ Eco work?

FermCap™ Eco is a patent pending processing aid, which has been developed as a more sustainable alternative to traditional silicon-based products.

FermCap™ Eco maximizes fermentation vessel capacity, reduces wort losses, maximizes CO₂ recovery, is not sensitive to cold temperature storage and is more economical to use.

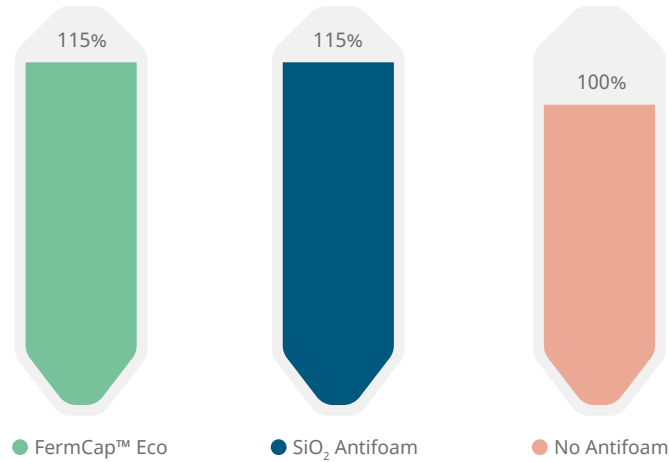
FermCap™ is a natural plant-based product – enabling you to produce beverages with vegan friendly claims.

FermCap™ Eco is part of Kerry's New Eco Brewing range, Inspired by nature



Increases Fermentation Vessel Capacity

by reducing foam height by up to 15% in the vessel.

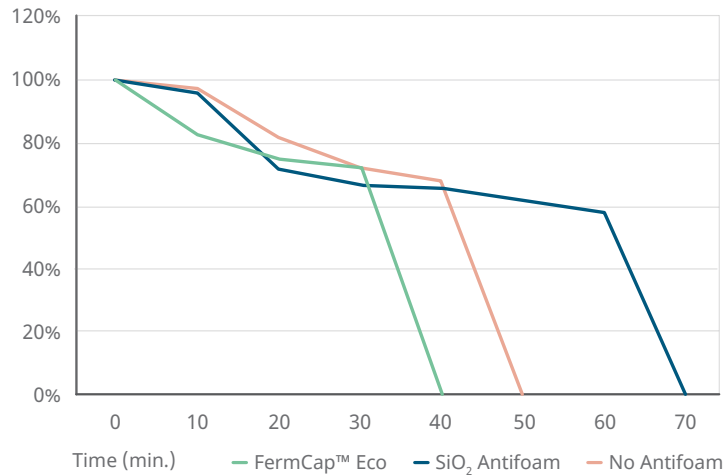


FermCap™ Eco reduces beer filtration time

57% reduction compared to untreated beer and 25% reduction compared to SiO₂ antifoam treated beer.

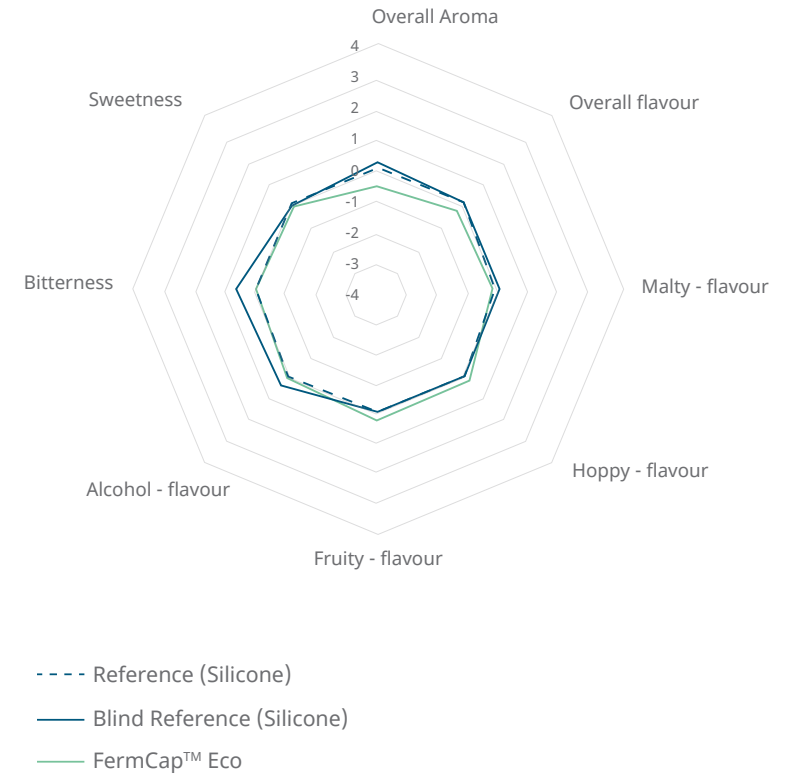
300 hl lager brew.

Beer samples filtered on PES cross flow membrane.



No impact on Beer Flavour

Tasting Panel for bottled beer over shelf life.



Kerry's business in brewing was founded by a master brewer over 50 years ago and his passion continues to inspire us.

All over the world, brewers are seeking to increase production, capacity, operational efficiencies in a sustainable way.

Our brewing ingredients portfolio of enzymes and processing aids help brewers to better control their processes, to create better beer and play a role in creating a better planet.

For further information, please contact your local sales representative.

Kerry.com